

Old Baldy Trail

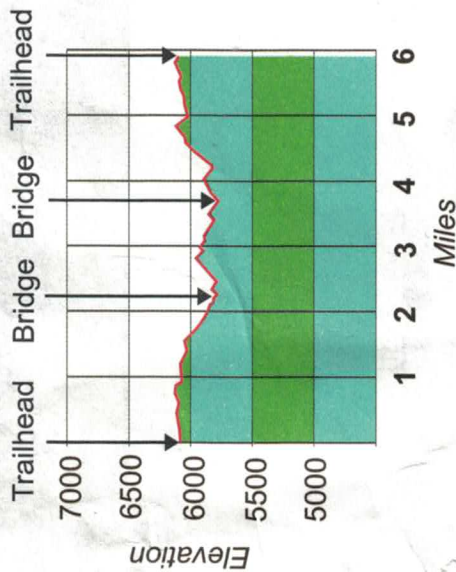
Moderate

Elevation: 5,800 to 6,096 feet

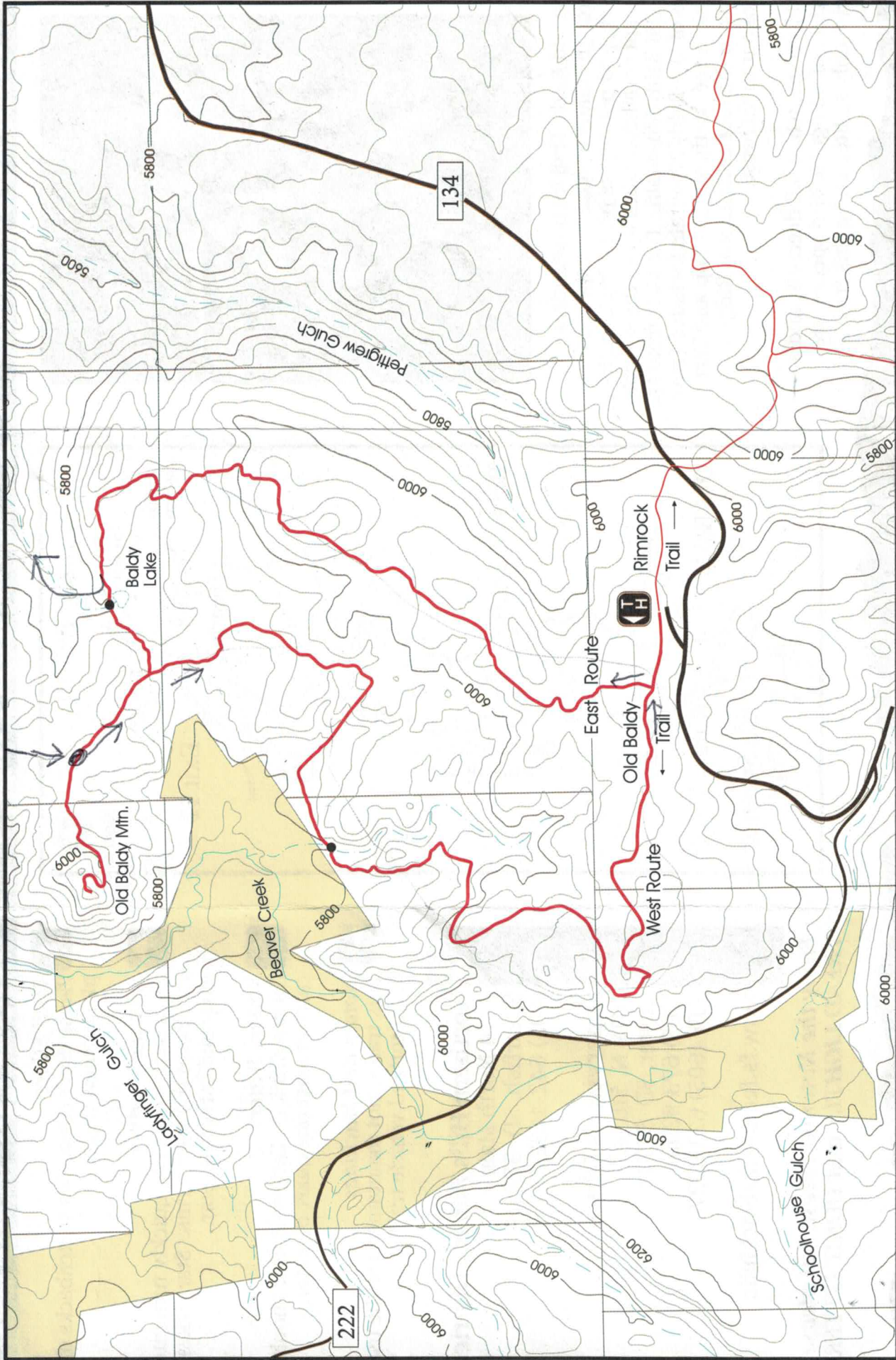
Length: 5.7 mile loop trail
0.7 mile spur trail to summit

Difficulty: Moderate

Location: From Spearfish take FSR 134 for approximately 13 miles to the trailhead or from Savoy take FSR 222 for 6 miles to the intersection with FSR 134. Travel north on FSR 134 for approximately 1.1 miles to the trailhead.



* Profile for the loop is clockwise around the loop. Profile of spur trail to Old Baldy Summit is not shown. Elevation gain to summit from main trail is 234 feet.



MAP LEGEND

Trail
Creek

County Road

Forest Service Road (FSR)

Trailhead

Trailhead
Private Land

Bridge Locations
Scale - 3" = 1 mile



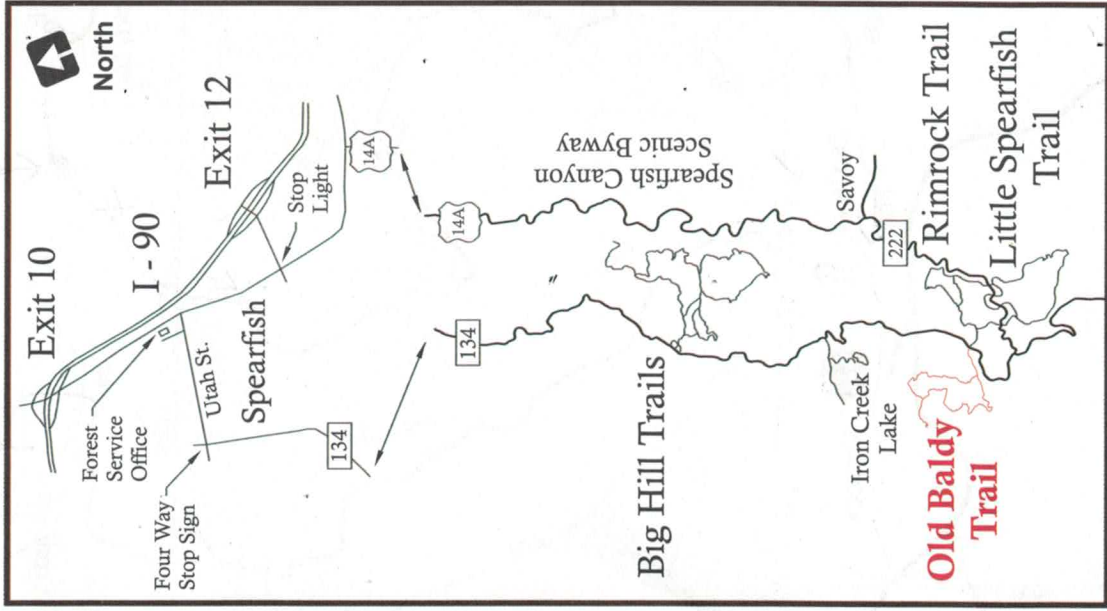
Trail Highlights



The Old Baldy Trail loop meanders through stands of quaking aspen, paper birch, and ponderosa pine. From the loop, the spur trail continues up to the summit of Old Baldy Mountain. The view from the top of Old Baldy Mountain includes Crow Peak to the north, Ragged Top and Terry Peak to the east and Cement Ridge Lookout to the west.

Wild turkey, white tail deer, elk, and a variety of non-game bird species are commonly sighted along this trail.

Location Map



General Information



Trail Ethics

Please don't cut across switchbacks or pioneer new trails.



Extreme Weather

Clear sunny days can quickly turn into afternoon thunderstorms. Start hikes early and carry rain gear.



Stream Water

Do not drink it! Each trail user should carry at least one quart of water.



Motors and Machines

This trail is not maintained for the use of motorized vehicle traffic.

MORE INFORMATION



Northern Hills Ranger District

2014 North Main
Spearfish, SD 57783
(605) 642-4622



Supervisor's Office

1019 N. 5th St.
Custer, SD 57730
(605) 673-9200
TTY (605) 673-9227

www.fs.fed.us/r2/blackhills

Enjoy the National Forest, but please TREAD LIGHTLY and DON'T LITTER.

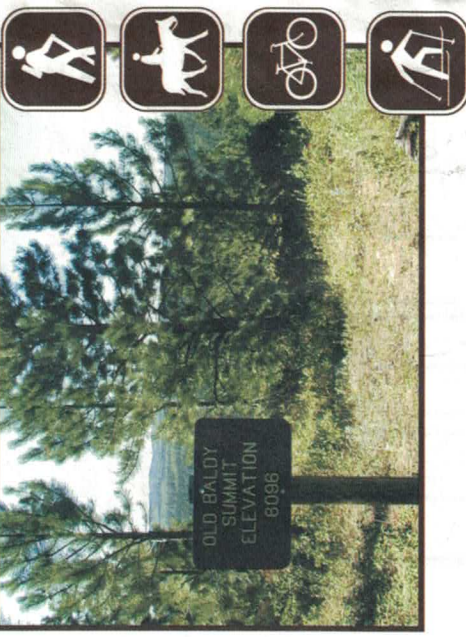
The United States Department of Agriculture (USDA) prohibits discrimination in its programs on the basis of race, color, national origin, gender, religion, age, disability, political beliefs, sexual orientation, and marital or family status. (Not all prohibited bases apply to all programs.) Persons with disabilities who require alternative means for communication of program information (Braille, large print, audiotape, etc.) should contact USDA's TARGET Center at (202) 720-2600 (voice and TDD).

To file a complaint of program discrimination, write USDA Director, Office of Civil Rights, Room 326-W, Whitten Building, 14th and Independence Avenue, SW, Washington, DC 20250-9410, or call (202) 720-5964 (voice and TDD). USDA is an equal opportunity provider and employer.

Reprinted 08/2008



Black Hills National Forest



Moderate

Old Baldy Trail

Trail Number 66